



ARCHULETA COUNTY

SHERIFF'S OFFICE

Evacuation Plan

**Evacuation Plan
2025**

Contents

Update Cycle	4
<i>Plan Maintenance, Training, and Exercises</i>	<i>4</i>
<i>Preface</i>	<i>5</i>
The Basic Plan	5
Plan Annexes	5
Signature/ Letter of Approval	5
<i>Introduction</i>	<i>6</i>
Purpose of Plan.....	6
Authority & Decision Making	6
<i>Evacuation Considerations</i>	<i>7</i>
Identify high hazard areas	7
Identify potential evacuation routes and centers.....	7
Alert and warn the public at risk.....	7
Utilities	7
Neighborhoods	7
Homeless & Tourists	7
Schools	7
Special Event Venues	8
Houses of Worship	9
Hospitals / Nursing Homes / Assisted living / Elder Care Facilities	9
Access & Functional Needs	10
Disaster Behavioral Health	10
High-Risk Areas	10
Animal Shelters.....	10
Airports	11

Evacuation Plan 2025

Correctional Facilities	11
<i>Concept of Operations</i>	11
Pre-Response/ Initial Actions	11
Evacuation Coordination.....	11
Evacuation Orders.....	12
Evacuation Task Force	12
Evacuation Routes & Traffic Flow + Control	12
Reception Center	12
Shelter-in-Place.....	13
Re-entry.....	13
Reunification	13
72-hour Leadership Plan	13
Communications.....	14
<i>Demobilization</i>	14
Notify Stakeholders	14
Disseminate Final Media Message	14
Close Out Operations.....	14
Conduct After-Action Analysis	14
<i>Roles and Responsibilities</i>	15
Roles and Responsibilities.....	15
Local Government Entities	16
Primary ESF.....	16
Support ESFs	17

Evacuation Plan 2025

Update Cycle

The Evacuation Plan will be reviewed annually by Archuleta County Sheriff's Office Emergency Management and updated as needed. Minor changes to this Plan or its Annexes to update facts/figures, as approved by the ACSO-EM Director or designee, will be accepted without re-promulgation. Updates to both the base plan and the annexes may be generated from After Action Reports (AAR) through both actual incidents, and exercises.

TABLE #1: Record of Plan review, revisions, and distribution.

<u>Date Revised</u>	<u>Revised By</u>	<u>Distribution</u>	<u>Remarks</u>
06/2025	Lacy Capre	ACSO Shared Drive	New Plan

Plan Maintenance, Training, and Exercises

A specific unit or person identified by position title should be designated to be responsible for maintaining the Evacuation Plan for the Archuleta County. The Plan should be reviewed at least annually and updated as necessary. In addition, the Plan should be updated on an ongoing basis to incorporate lessons learned from exercises and/or actual events as identified in an after-action analysis.

Key to the maintenance of the Evacuation Plan is participation in regular training and emergency exercises to ensure that all parties are familiar with the procedures to be followed in the event of an emergency. Two types of training are necessary to ensure that the Evacuation Plan can be activated and operated successfully.

First, those persons who have been pre-identified for key staff positions should be trained in advance in order to perform effectively. Training should include review of the Plan, and walk-through of all aspects of reunification operations, from activation demobilization. It is desirable to cross-train potential staff in the various functions associated with evacuation.

Second, Just-in-Time (JIT) Training materials should be included in the Plan. The purpose of JIT Training is to refresh the knowledge of those persons who have been pre-trained, and to provide persons with no prior training with the tools to perform their assigned functions. A unit or individual, identified by position title, should be designated to coordinate training activities. Training should be conducted on a regularly scheduled basis and should be documented.

In addition to regular training, tabletop and other discussion-oriented exercises should be used to familiarize staff with plans, including recent updates. Drills, functional and full-scale exercises provide opportunities for planners to test management in a tactical manner and ideally should include interaction with external partners, such as a local Multi Agency Coordination Group (MACG).

Evacuation Plan 2025

Preface

This document has been organized in two parts:

The Basic Plan

Provides guidance for an initial response, a concept of operations, inter-departmental roles and responsibilities in the event of an evacuation within Archuleta County. The evacuation plan is consistent with and supports the Archuleta County Emergency Operations Plans and is compliant with the National Incident Management System (NIMS).

Plan Annexes

Consists of several support annexes that provide additional planning and guidance documents which further detail intra-departmental response procedures and protocols to be used in facilitating the effective delivery of emergency technical assistance and public information. In addition, various other appendices and attachments have been included as resources and reference material which will facilitate a more efficient response process.

Signature/ Letter of Approval

This Evacuation Plan has been developed for use by the Archuleta County Sheriff's Office Emergency Management (ACSO-EM). By affixing the signature indicated below, this Evacuation Plan is hereby approved for implementation and intended to supersede all previous versions.

Emergency Management Commander

Date

Evacuation Plan 2025

Introduction

Purpose of Plan

The purpose of the Evacuation Plan is to provide an overview of evacuation functions, agency roles and responsibilities, and overall concept of operations for the evacuation of people from hazardous areas to areas of safety for incidents, with or without warning. It is not intended to address evacuation procedures of any specific facility, such as a hospital, school, or assisted living center, rather it provides support in coordinating these facility evacuations. Such facilities are required to have their own evacuation strategies. The plan is based on best practices and concepts that have been proven during previous disasters. The plan emphasizes coordination among the various organizations/agencies participating in evacuation management operations. These organizations/agencies include: Federal, tribal, state and local government entities, non-government organizations (NGOs), National and State Voluntary Organizations Active in Disaster (VOADs) member organizations and other voluntary organizations involved with the private sector.

The Evacuation Plan and supporting annexes are developed and updated with input from staff in the Office of Emergency Preparedness and Response and the Archuleta County Emergency Manager. Other partners are involved as needed. Draft plans are developed and then reviewed numerous times by appropriate participants (above). All plans are reviewed annually as needed.

Authority & Decision Making

In Colorado, the authority for ordering evacuations rests with the principal law enforcement agency of the jurisdiction. Fire districts may also order evacuation. Mandatory evacuation authority rests with the Governor. Under Colorado Revised Statutes §24-33.5-704, the Governor possesses the authority to direct and compel evacuations during a state of disaster emergency. While this statute grants the Governor overarching power, it does not preclude local officials, including sheriffs, from taking action to protect public safety within their jurisdictions.

The National Incident Management System will be utilized for all incident management in the County. “Incident” as used herein means “An occurrence that requires some level of response, Res. No. 2005-50; 12-20-2005.

Evacuation Plan 2025

Evacuation Considerations

Not all emergencies requiring protective action require evacuation. The Incident Commander (IC) must weigh the risks of the hazard against the risks of evacuating or sheltering in place. Before an evacuation can be implemented, the IC must:

Identify high hazard areas

Areas that may be impacted if the incident escalates or conditions change.

Identify potential evacuation routes and centers

Assess their capacities and vulnerability to the hazard.

Alert and warn the public at risk

Include specific information about the risk, the protective actions that need to be taken, and the possible risks of noncompliance, refer to [Alert & Warning Annex](#).

Utilities

If the hazard impacts utilities, control centers for electrical power, telephone, or water plants, loss or damage to those utilities must be anticipated and relayed to the EOC.

Neighborhoods

ACSO-EM will coordinate within the operational area and with neighboring counties, tribes, and the State concerning the destinations for evacuees and the flow of transportation assets and will ensure the jurisdictions receiving evacuees from an impacted area agree to accept these individuals prior to evacuation when possible. ACSO-EM will work with subject matter experts to analyze current and evolving threats to create “just in time” evacuation and pre-evacuation zones.

Homeless & Tourists

People experiencing homelessness and those temporarily in the area may experience some of the needs addressed by the [C-MIST](#) framework (Communication, Medical, Independence, Supervision, Transportation). ACSO-EM should work with partners to ensure communication and warnings are received by hard-to-reach populations. Evacuation sites may need to be flexible about identification requirements and allow alternative forms of identification for check in and resource requests.

When providing support to Points of Distribution (PODs) during an emergency or a public health event, ACSO-EM and partner agencies will not discriminate due to housing status or proof of residency.

Schools

Schools have their own internal evacuation plans and can request communication, coordination, and management assistance from ACSO-EM as needed. Additionally, schools may serve as resources during a mass evacuation.

Evacuation Plan 2025

Archuleta School District 50 JT: 309 Lewis St, Pagosa Springs, CO 81147 (970) 264-2228

Pagosa Springs High School: 800 South 8th St, Pagosa Springs, CO 81147 (970) 264-2231

Pagosa Springs Middle School: 309 Lewis St, Pagosa Springs, CO 81147 (970) 264-2794

Pagosa Springs Elementary School: 141 South 10th St, Pagosa Springs, CO 81147 (970) 264-2229

Pagosa Peak Open School: 3133 Cornerstone Dr, Pagosa Springs, CO 81147 (970) 317-2151

Pagosa Springs GOAL Academy: 105 Country Center, Ste F, Pagosa Springs, CO 81147 (877) 776-4625

Our Savior Lutheran School: 56 Meadows Dr, Pagosa Springs, CO 81147 (970) 731-4668

Pagosa Springs Seventh-Day Adventist School: 40 Oren Rd, Pagosa Springs, CO 81147 (970) 731-1005

Pagosa Valor Academy: 264 Village Dr, Pagosa Springs, CO 81147 (970) 264-4782

Special Event Venues

Special event venues have their own internal evacuation plans and can request communication, coordination, and management assistance from ACSO-EM as needed. Additionally, special event venues may serve as resources during a mass evacuation, in coordination with partner agencies.

Archuleta County Fairgrounds: 344 Highway 84, Pagosa Springs, CO 81147 (970) 264-8424

Ross Aragon Community Center: 451 Hot Springs Blvd, Pagosa Springs, CO 81147 (970) 264-4152

PLPOA Clubhouse: 230 Port Ave, Pagosa Springs, CO 81147 (970) 731-5635

Evacuation Plan 2025

Houses of Worship

Houses of worship may have their own internal evacuation plans and can request communication, coordination, and management support from ACSO-EM as needed. Additionally, they may serve as community resources during a mass evacuation, in coordination with partner agencies.

Church of Christ: 277 Lewis St, Pagosa Springs, CO 81147 (970) 264-2552

Community United Methodist Church: 434 Lewis St, Pagosa Springs, CO 81147 (970) 264-5508

Grace in Pagosa: 1044 Park Ave, Pagosa Springs, CO 81147 (970) 731-6200

Ahavat Adonai Messianic Congregation: 1044 Park Ave, Pagosa Springs, CO (970) 946-5262

The Church of Jesus Christ of Latter-Day Saints: 1879 Majestic Dr, Pagosa Springs, CO 81147 (970) 731-2623

Pagosa Bible Church: 209 Harman Park Dr, Pagosa Springs, CO 81147 (970) 731-3120

Centerpoint Church: 2750 Cornerstone Dr, Pagosa Springs, CO 81147 (970) 731-2205

Jehovah's Witnesses: 35 Meadows Dr, Pagosa Springs, CO 81147 (970) 731-5826

St Patrick's Episcopal Church: 225 S. Pagosa Blvd, Pagosa Springs, CO 81147 (970) 731-5801

Immaculate Heart of Mary: 451 Lewis St, Pagosa Springs, CO 81147 (970) 264-4131

Trinity Anglican Church: 246 Harman Park Dr, Pagosa Springs, CO 81147 (970) 585-4124

Pagosa Baptist Church: 10533 W. Highway 160, Pagosa Springs, CO 81147 (970) 946-5166

Restoration Fellowship: 264 Village Dr, Pagosa Springs, CO 81147 (970) 731-2937

Amazing Grace Community Church: 77 Navajo Cir, Pagosa Springs, CO (970) 444-2111

Open Door Church: 110 Trinity Lane, Pagosa Springs, CO 81147 (970) 731-5767

Pope John Paul II Catholic Church: 353 S. Pagosa Blvd, Pagosa Springs, CO 81147 (970) 731-5744

Our Savior Lutheran Church: 56 Meadows Dr, Pagosa Springs, CO 81147 (970) 731-4668

Seventh Day Adventist Church: 40 Oren Rd, Pagosa Springs, CO 81147 (970) 731-1005

Pagosa Unitarian Universalist: 301 N. Pagosa Blvd, Ste B-15, Pagosa Springs, CO 81147 (970) 731-7900

Hospitals / Nursing Homes / Assisted living / Elder Care Facilities

Medical and assisted living facilities are required to maintain evacuation plans. These plans may be shared with the Southwest Healthcare Coalition. Archuleta County Public Health may assist these facilities and can request support from ACSO-EM, as necessary. Clear and timely communication about the nature and evolution of the threat is necessary for safe evacuation.

Archuleta County Public Health: 502 S. 8th St, Pagosa Springs, CO 81147 (970) 264-2409

Pagosa Springs Medical Center: 95 S. Pagosa Blvd, Pagosa Springs, CO 81147 (970) 731-3700

Pine Ridge Rehabilitation & Healthcare Center: 119 Bastille Dr, Pagosa Springs, CO 81147 (970) 731-4330

Beehive Homes of Pagosa Springs: 662 Park Ave, Pagosa Springs, CO 81147 (970) 444-5515

Visiting Angels of Pagosa Springs: 301 N. Pagosa Blvd, Unit B10, Pagosa Springs, CO 81147 (970) 264-5991

Evacuation Plan 2025

Access & Functional Needs

When providing support during an emergency or a public health event, ACSO-EM and partner agencies will adhere to requirements set forth in the Americans with Disabilities Act regarding access and functional needs. Access and functional needs can be more specifically assessed and addressed through the function-based framework: [C-MIST](#). By asking people and the agencies that serve them about their needs, ACSO-EM can more instantly connect them to appropriate resources during an evacuation. Consider:

Communication: how to present information during an emergency via sign language, interpreters, etc.

Medical: managing chronic, acute, terminal, and/or contagious health conditions.

Independence: people who function independently with assistive devices.

Supervision: may include people with psychiatric needs or those who need controlled settings.

Transportation: people who have mobility limitations and need assistance moving between areas.

Disaster Behavioral Health

Axis Health Systems is the lead agency responsible for behavioral health services in SW Colorado. Axis partners with Archuleta County Public Health (ACPH) for matters regarding behavioral health in the region. Coordination and continued planning efforts are facilitated regularly.

During a crisis, ACPH will coordinate with behavioral health partners to provide psychological first aid in times of an emergency and/or disaster. Colorado Department of Public Health and Environment Office of Emergency Preparedness and Response (CDPHE-OEPR) can always be contacted to request disaster behavioral health services at 1-877-518-5608. Additional [CoCERN](#) information is available.

High-Risk Areas

Upper San Juan Search and Rescue (USJSAR) can be dispatched to trails and outdoor recreation areas to notify campers and hikers of an oncoming threat and need to evacuate. Evacuations of high-risk areas should be communicated through the ACSO-EM. Considerations are heightened for subdivisions located within the Wildland Urban-Interface (WUI).

Animal Shelters

Contact the Humane Society of Pagosa Springs to support evacuation and resource management for pets. Archuleta County CSU Extension office can support evacuation and resource management for horses and livestock. Archuleta County Sheriff's Office will manage animal welfare concerns in a mass sheltering scenario.

Humane Society of Pagosa Springs: 465 Cloman Blvd, Pagosa Springs, CO 81147 (970) 731-4771

Archuleta County CSU Extension Office: 344 Highway 84, Pagosa Springs, CO 81147 (970) 264-5931

Archuleta County Animal Control: 85 Harman Park Dr, Pagosa Springs, CO 81147 (970) 731-2160

Evacuation Plan 2025

Airports

The Fixed Base Operator (FBO) at Stevens Field (Pagosa Springs Airport) may be used to support evacuation operations in coordination with ACSO-EM and partner agencies. This includes serving as a staging area for emergency personnel, facilitating air transport for medical or high-risk individuals, receiving supply deliveries, and potentially assisting with the evacuation of animals or residents in isolated areas, depending on aircraft availability and weather conditions.

The Sheriff's Office will coordinate with the Airport Manager, Federal Aviation Administration (FAA), the U.S. Forest Service (USFS), Colorado Division of Fire Prevention and Control (DFPC), and other partner agencies to support air operations during evacuations. This may include requesting Temporary Flight Restrictions (TFRs) through the appropriate incident command structure and ensuring ground-level safety and coordination for aerial operations, including medevac, law enforcement, and fire suppression aircraft.

Nick's Hanger: 777 County Road 600, Pagosa Springs, CO 81147 (970) 731-3060

Correctional Facilities

Archuleta County Detention Facility has its own internal evacuation plans and can request communication, coordination, and management assistance from ACSO-EM as needed.

Archuleta County Detention Facility: 125 Harman Park Dr, Pagosa Springs, CO 81147 (970) 264-8474

Concept of Operations

Pre-Response/ Initial Actions

The ACSO-EM works with County agencies and non-governmental partners and stakeholders to determine the support required for anticipated evacuation scenarios. Those with access and functional needs may require extended time to evacuate and need as much advanced warning as possible.

Evacuation Coordination

Evacuations within Archuleta County, including those affecting incorporated municipalities, are coordinated by the ACSO-EM. When the impact of an emergency exceeds the capacity of a single jurisdiction or affects multiple areas, the County Emergency Operations Center (EOC) will be activated to manage an area-wide evacuation or to support the movement of large numbers of evacuees into, through, or out of Archuleta County.

Evacuation Plan 2025

Evacuation Orders

Evacuation orders may be voluntary or mandatory. In Archuleta County, an evacuation order can be given by the County Sheriff and/or Fire & Law Incident Commander(s), with input from the County Manager.

Note: despite a voluntary or mandatory evacuation order, members of the public might remain in the affected area(s). Public information systems should continue to provide clear instruction through all available alert and warning systems and mechanisms.

Evacuation Task Force

The EOC may need to coordinate the assembly of evacuation task force units that can enter the threatened area and evacuate people with access and functional needs, animals, and others.

Evacuation Routes & Traffic Flow + Control

Major Evacuation Routes are major highways such as HWY 160 and HWY 84. The Sheriff's Office is the primary lead agency for the Evacuation Movement Unit, and as such is responsible for the overall evacuation and movement of citizens throughout the operational area.

Major routes may be compromised or rendered impassable depending on incident specifics—for example, wildfires may block highways or isolate neighborhoods from primary evacuation corridors. In such cases, the Sheriff's Office can coordinate with Archuleta County Road and Bridge, the Colorado Department of Transportation (CDOT), municipal public works departments, local fire protection districts, and the U.S. Forest Service (USFS) to identify, clear, and utilize alternative routes to maintain the safe and orderly movement of evacuees.

Reception Center

A reception center is a short-term emergency location set up to assist individuals who have been displaced or stranded due to a disaster or emergency. It can also act as a centralized location for spontaneous or pre-registered volunteers to check in, receive assignments, and undergo Just-in-Time training before being deployed to support response operations (e.g., shelter staffing, logistics, animal care) Its primary purpose is to:

- Provide immediate safety and shelter from hazards
- Offer **basic** support services like water, snacks, restrooms, first aid, and information
- Register evacuees to support reunification and connect them with further shelter and services
- Coordinate pet intake or refer animal owners to co-located pet shelters
- Act as a staging area before people are transported or directed to a long-term shelter if needed
- Coordinate volunteer efforts

Evacuation Plan 2025

Shelter-in-Place

Not all emergencies require evacuation. Shelter-in-place may be a viable option to protect the public by instructing residents to remain indoors at their home, place of business, school, etc. The Incident Commander (IC) must weigh the risk of the hazard danger against the risk inherent in evacuation verses protection in place. If shelter-in-place is to be used, it must be properly and effectively communicated to the public, refer to [Alert & Warning Annex](#).

Re-entry

Once the threat has passed and the evacuated area is safe from debris, contamination, or other residual threats, the evacuated persons will be allowed to re-enter the area. ACSO-EM will coordinate routes and an appropriate resource use strategy to support re-entry. Additional partners may need to evaluate impacts on health and safety, depending on the event.

The re-entry strategy will be coordinated with regional partners, as any evacuation will likely have impacts beyond the operational area. The Emergency Manager is responsible for providing the Public Information Officer (PIO) with information regarding the safe return to the evacuated area. Those who needed assistance to evacuate may need assistance during re-entry.

Reunification

ACSO-EM anticipates that agencies that commonly work with children and families will create their own specific guidance for reunification procedures (hospitals, childcare facilities, schools, etc.). Archuleta County Department of Human Services (AC DHS) and the American Red Cross partner to manage Mass Care and Shelter facilities. Additionally, AC DHS has Child and Family Services staff that may serve as resources during family reunification. ACSO-EM may support any of these agencies as requested; tools such as Salamander and/or RapidTag may be deployed to support tracking and reunification efforts. ACSO-EM may also coordinate resources or facility acquisition for a Family Reunification Center, if requested. Refer to the [Reunification Annex](#) for further details.

Reunification Toolkit Resources: [SRP ♥ The "I Love U Guys" Foundation](#)

72-hour Leadership Plan

During the first operational period of EOC activation during an event requiring evacuations, ACSO-EM will coordinate with ESFs 1, 6, 8, and 13 to ensure leadership at evacuation staging points and/or shelters for up to 72 hours. The plans agreed upon can be captured in the incident action plan with the support of the Incident Commander. ACSO-EM will also contact the local American Red Cross for support in anticipation of mass care and shelter needs due to evacuation. Refer to the [Mass Care & Sheltering Plan](#) for further details.

American Red Cross of Western Colorado: (970) 242-4851

Evacuation Plan 2025

Communications

Communications is a key element of managing an emergency requiring evacuation. Communications includes information sharing among responders and staff as well as public information and risk communications. Once the initial notifications are sent out to the community, there will be an ongoing need to monitor the evolving situation and keep everyone informed of the status the emergency incident. There are several aspects of this ongoing effort, including general public messaging procedures for media and social media, communications with staff, and information sharing with emergency support functions.

Demobilization

During the planning process, the Incident Commander responsible for evacuation management has primary authority to determine when demobilization is appropriate. The decision to demobilize is subjective and will depend on the circumstances of a given situation. Wherever possible, the Incident Commander should consult with local partners in the course of determining if the time is right to demobilize. This communication will be especially critical in the event of a widespread emergency.

Notify Stakeholders

As soon as the decision to demobilize has been made by the Incident Commander, and the demobilization date and time are decided, all participating agencies and other key partners should be notified.

Disseminate Final Media Message

The Incident Commander should provide all relevant information to the Public Information Officer (PIO) to prepare messaging regarding the demobilization. Final messaging should go out on all media platforms that have been operational during the emergency, including public media outlets and social media platforms.

Close Out Operations

Return all equipment and supplies to the appropriate storage area or other location(s). Collect and secure all forms, checklists, and other written material utilized in the operation and give them to Emergency Manager for disposition.

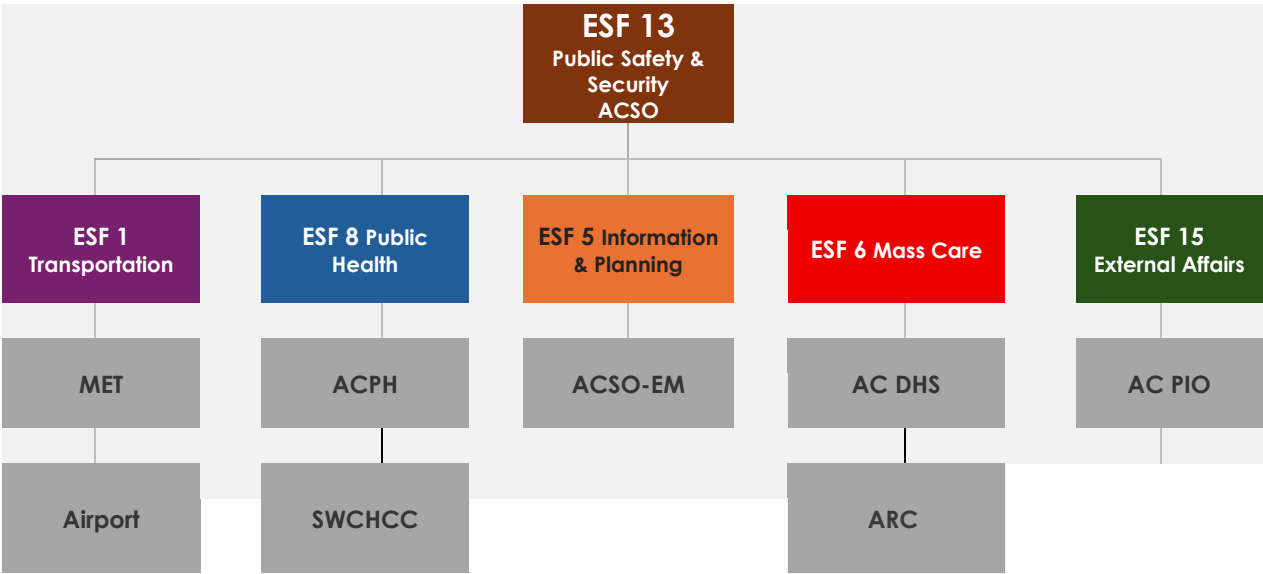
Conduct After-Action Analysis

As soon as possible following demobilization, a debrief should be scheduled to identify and document “lessons learned” and to recommend changes in the plan if indicated. This debrief is often referred to as an “after-action report” (AAR) and is a key element of the ongoing review and maintenance of the Evacuation Plan, as well as of emergency planning in general. Everyone inside the organization and in the community that participated in the evacuation effort should participate in the AAR. This should include the emergency responders, other organization officials, and community partners. The AAR should document significant events and issues, positive and negative concerning evacuation operations.

Roles and Responsibilities

Roles and Responsibilities


The following shows the primary entities that will be involved with the evacuation and movement of people in the County; it is not inclusive of all the possible entities that could be involved. For example, in a large regional disaster, other County entities as well as the State and Federal Government may be needed to provide resources.



Evacuation Plan 2025

Local Government Entities

Primary ESF

ESF 13 - Public Safety and Security	
	<p>The Sheriff's Office is the primary lead agency for the Evacuation Movement Unit, and is responsible for the overall evacuation and movement of citizens throughout the operational area. Furthermore, law enforcement agencies will be integral in the tactical incident command post in evacuating people from the impacted area.</p>
ESF 13 Coordination List	
Status	Action
<input type="checkbox"/> Initiated	IC at designated Command Post. Pre-identify evacuation assembly points for evacuees.
<input type="checkbox"/> In-Progress	Coordinate re-entry when safe to do so with local officials, County OEM, and appropriate partner agencies. Re-entry may require health and safety assessments. Appoint a Coroner Unit and Leader, as necessary.
<input type="checkbox"/> Completed	
<input type="checkbox"/> N/A	
ESF 13 Public Alert & Warning	
Status	Action
<input type="checkbox"/> Initiated	Coordinate with ACSO-EM to provide situational awareness to ESF 15 to develop public messaging. Alert the SWCHCC for notification assistance. Give ample and redundant information to critical facilities, such as daycares, schools, adult residential care, skilled nursing, etc. These facilities will need additional time to close or evacuate.
<input type="checkbox"/> In-Progress	
<input type="checkbox"/> Completed	
<input type="checkbox"/> N/A	
ESF 13 Traffic Control	
Status	Action
<input type="checkbox"/> Initiated	Pre-identify evacuation routes (keeping in mind fueling services will be needed on evacuation routes) and transit pickup points.
<input type="checkbox"/> In-Progress	Facilitate the movement of emergency vehicles with local police and the Colorado Highway Patrol. Major Evacuation Routes are major highways such as HWY 160 and HWY 84.
<input type="checkbox"/> Completed	Control and monitor primary routes and area access.
<input type="checkbox"/> N/A	

Evacuation Plan 2025

Support ESFs

ESF 5 - Information & Planning



The ACSO-EM is charged with emergency management for the County and is responsible for maintaining situational awareness of threats that may necessitate an evacuation. In cases where an emergency or disaster exists, the ACSO-EM will coordinate the County government's role in response to and recovery from the disaster.

ESF 5 Coordination List

Status	Action
<input type="checkbox"/> Initiated	Activate an information coordination conference call with MACG for increased situational awareness of the incident, need to activate the EOC, etc.
<input type="checkbox"/> In-Progress	
<input type="checkbox"/> Completed	Activate the EOC, in coordination with the County Administrator, to the appropriate emergency level.
<input type="checkbox"/> N/A	Communicate plans and support needs to DHSEM.
	Request assistance from support agencies and communication resources, as appropriate.
	Coordinate notifications as needed, refer to Alert & Warning.
<input type="checkbox"/> Initiated	Coordinate with ESFs 1, 6, 8, and 13 to ensure leadership at evacuation staging points and/or shelters for up to 72 hours.
<input type="checkbox"/> In-Progress	
<input type="checkbox"/> Completed	Provide situational awareness and recommendations to ESF 15 to develop public messaging, providing information on mass care sites, available services, available evacuation routes, and transportation options.
<input type="checkbox"/> N/A	

ESF 5 EOC Activation

Status	Action
<input type="checkbox"/> Initiated	Notify staff of pending EOC activation, and/or to current activation levels, coordinate staffing of all needed positions.
<input type="checkbox"/> In-Progress	
<input type="checkbox"/> Completed	Use the Multi-Agency Coordination Group (MACG) for coordination and decision-making purposes.
<input type="checkbox"/> N/A	Maintain coordination and communication between the EOC and support agencies, including direct communication with the ICP.
	Communicate with DHSEM keeping the State apprised of local situation.
<input type="checkbox"/> Initiated	Coordinate with IC for updates regarding the incident as appropriate.
<input type="checkbox"/> In-Progress	Identify and provide help, in coordination with ESF 6 & ESF 8, to inform ESF 15 of notification needs including to AFN populations.
<input type="checkbox"/> Completed	
<input type="checkbox"/> N/A	

Evacuation Plan 2025

ESF 6 - Mass Care & Human Services



The Archuleta County Department of Human Services (AC DHS) is responsible for coordination of sheltering and mass care, refer to Mass Care & Sheltering Annex. Additionally, DHS is responsible for the support of the movement of people with AFN during an incident that requires evacuation.

ESF 6 Coordination List

Status	Action
<input type="checkbox"/> Initiated	Coordinate transportation of non-ambulatory persons and other people with disabilities.
<input type="checkbox"/> In-Progress	Coordinate with ESF 8 as appropriate.
<input type="checkbox"/> Completed	Provide specialized staff to shelter locations if requested.
<input type="checkbox"/> N/A	Support disaster victims and/or shelter inhabitants in obtaining information for recovery programs.
	Support re-entry and specialized transportation of non-ambulatory persons and evacuees with AFN.
	Coordinate the reunification of children who have been evacuated without an appropriate adult.
<input type="checkbox"/> Initiated	Coordinate with the Humane Society of Pagosa Springs to place evacuated household animals.
<input type="checkbox"/> In-Progress	Attempt to place animals with owners when possible.
<input type="checkbox"/> Completed	Ensure that service animals are not separated from their handlers and coordinate with ESF 11 to provide accommodations for service animals if needed
<input type="checkbox"/> N/A	

ESF 6 Public Alert & Warning

Status	Action
<input type="checkbox"/> Initiated	AC DHS to coordinate with ESF 5 and ESF 15 to develop messaging and notify the public
<input type="checkbox"/> In-Progress	(including people with AFN and those with limited English proficiency) of a disaster event
<input type="checkbox"/> Completed	or evacuation, refer to Alert & Warning.
<input type="checkbox"/> N/A	

ESF 8 - Public Health & Medical




ACPH is responsible to identify the public health and medical needs of those impacted by the emergency, including patients evacuating medical care facilities, people in hospitals, hospices, and nursing homes as well as individuals who are identified at evacuation centers as needing medical assistance. Care for evacuees whose needs cannot be accommodated in general population shelters, monitor support for individuals at pickup points.

ESF 8 Coordination List

Status	Action
<input type="checkbox"/> Initiated	With the support of AC DHS and ACSO-EM, coordinate specialized transportation and care for evacuees with
<input type="checkbox"/> In-Progress	medical and functional needs, whether in general population shelters or at other care sites.
<input type="checkbox"/> Completed	Provide specialized knowledge when evaluating health and safety concerns prior to re-entry (water systems,
<input type="checkbox"/> N/A	food storage, air quality).
<input type="checkbox"/> Initiated	Coordinate SWCHCC partners to provide health and medical recommendations, resources, and support to the
<input type="checkbox"/> In-Progress	public.
<input type="checkbox"/> Completed	
<input type="checkbox"/> N/A	

Evacuation Plan 2025

ESF 1 - Transportation

	<p>Municipalities within Archuleta County have transit and transportation services within their county government. The following information outlines the coordination efforts and transit services available to support evacuations within the County.</p>
---	---

ESF 1 Transportation Coordination

Status	Action
<input type="checkbox"/> Initiated	<p>Activate the Transit Coordination Center and respond to transit resource requests from the ACSO, specifically from the Evacuation Movement Unit. Activate partner transit entity management to provide transit resources to the evacuation area. Coordinate paratransit resources in the County in response to evacuation of people with AFN.</p>
<input type="checkbox"/> In-Progress	
<input type="checkbox"/> Completed	
<input type="checkbox"/> N/A	


ESF 1 Public Alert & Warning

Status	Action
<input type="checkbox"/> Initiated	<p>Update Transportation webpage to warn or alert transit passengers with emergency information. Coordinate with ESF 5 to activate alert and warning messages to partner transit agencies and to develop notification to people with limited English proficiency.</p> <p>Coordinate with ESF 5 to provide situational awareness and recommendations to ESF 15 of public messaging needs.</p>
<input type="checkbox"/> In-Progress	
<input type="checkbox"/> Completed	
<input type="checkbox"/> N/A	

ESF 1 Local Transit Services

Municipality	Local Transit	Authority
Mountain Express Transit	83 Harman Park Dr, Pagosa Springs, CO 81147 (970) 264-2250	Archuleta County

ESF 15 - External Affairs

	<p>Public Information Officers provide accurate, coordinated, timely, and accessible information to affected populations, including governments, media, the private sector, and the local populace, including children; those with disabilities and others with AFN, and individuals with limited English proficiency.</p>
---	--

ESF 15 Coordination List

Status	Action
<input type="checkbox"/> Initiated	Provide emergency public information.
<input type="checkbox"/> In-Progress	Provide continuous and accessible public incident information.
<input type="checkbox"/> Completed	Ensure that information is authentic and valid and informs individuals with sensory, intellectual, or cognitive disabilities; individuals with limited English proficiency; and others with AFN.
<input type="checkbox"/> N/A	<p>Coordinate the actions for public information releases.</p> <p>Inform responding stakeholders how to, or when not to, interact with the media during an emergency.</p>

Board of County Commissioner Approval

Name Veronica Medina Date July 1, 2025
Veronica Medina

Name Warren Brown Date 07/01/2025
Warren Brown

Name John Ranson Date 7/1/2025
John Ranson